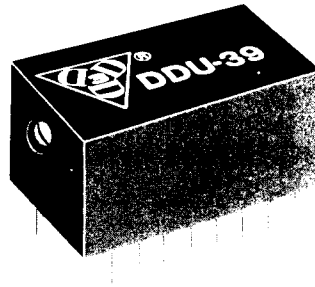


Digital Delay Units

SERIES: **DDU-39LS**

Continuously Variable
TTL Interfaced

**data
delay
devices, inc.**

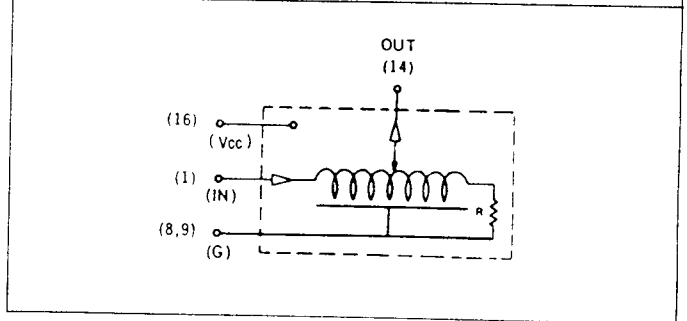
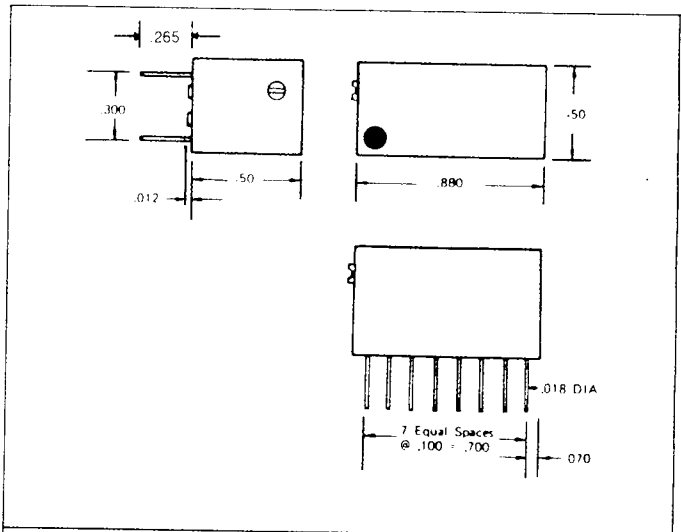


Features:

- Completely interfaced with TTL.
- 0.5 ns adjustment resolution.
- Fits standard 16 pin DIP sockets.

Specifications:

- Temperature coefficient: 220 PPM/ C.
- Rise-Time: 4 ns typically.
- Temperature range: 0 C to 70 C standard.
(- 55 C to + 125 C on request)*
- Supply voltage: 5 Vdc \pm 5%.
- DC parameters: See TTL-Fast Schottky Logic Table on Page 6.



Part No.	Inherent Delay Typ.	Adjustment Range Typ.	Power Dissipation
DDU39LS	12 ns	12 ns to 32 ns	230 mw Max.