

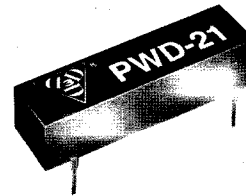
# Fast Logic Pulse Width Discriminator

**SERIES: PWD-21**  
TTL Interfaced



**Features:**

- Auto-Insertable.
- Completely Interfaced with TTL and DTL application.
- No external components required.
- P.C. board space economy achieved.
- Fits standard 14 pins DIP socket.

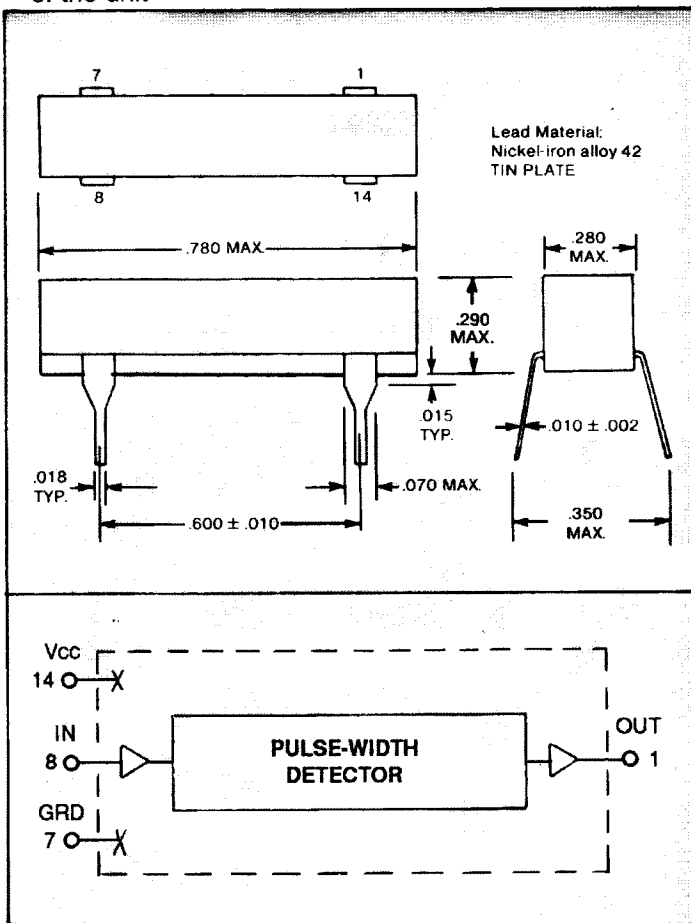


**Specifications:**

- Pulse-width tolerance:  $\pm 5\%$  or better 2 ns whichever is greater.
- Rise-time: 2 ns typically.
- Temperature coefficient: 100 PPM/ $^{\circ}\text{C}$ .
- Temperature range:  $0^{\circ}\text{C}$  to  $70^{\circ}\text{C}$  standard.
- Minimum pulse rep. rate =  $2.5 \times$  pulse-width of the unit

- Supply voltage: 4.75 to 5.25 Vdc.
- Supply current:  
I<sub>ccL</sub>: 32 ma.  
I<sub>ccH</sub>: 7 ma.

■ DC Parameters: See TTL-Fast Schottky Logic Table on Page 6.



Part No.	Pulse Widths (ns)		
	Nominal	Suppress	Pass
PWD-21-5	5	≤4	≥6
PWD-21-10	10	≤9	≥11
PWD-21-15	15	≤14	≥16
PWD-21-20	20	≤19	≥21
PWD-21-25	25	≤24	≥26
PWD-21-30	30	≤29	≥31
PWD-21-35	35	≤34	≥36
PWD-21-40	40	≤39	≥41
PWD-21-45	45	≤43.5	≥46.5
PWD-21-50	50	≤48.5	≥51.5
PWD-21-60	60	≤58	≥62
PWD-21-70	70	≤68	≥72
PWD-21-75	75	≤73	≥77
PWD-21-80	80	≤78	≥82
PWD-21-90	90	≤88	≥92
PWD-21-100	100	≤98	≥102
PWD-21-125	125	≤123	≥127
PWD-21-150	150	≤147	≥153
PWD-21-175	175	≤172	≥178
PWD-21-200	200	≤196	≥204
PWD-21-250	250	≤245	≥255
PWD-21-300	300	≤294	≥306
PWD-21-400	400	≤392	≥408
PWD-21-500	500	≤490	≥510